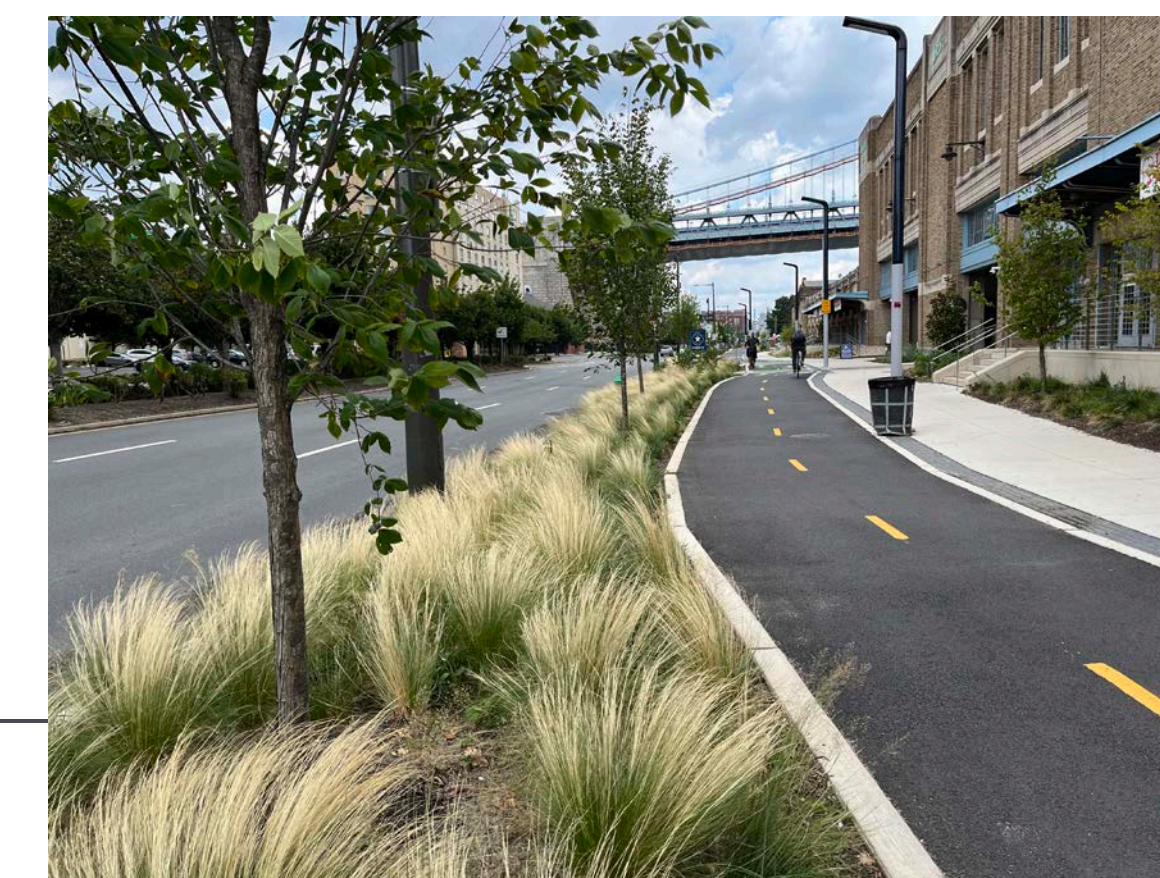
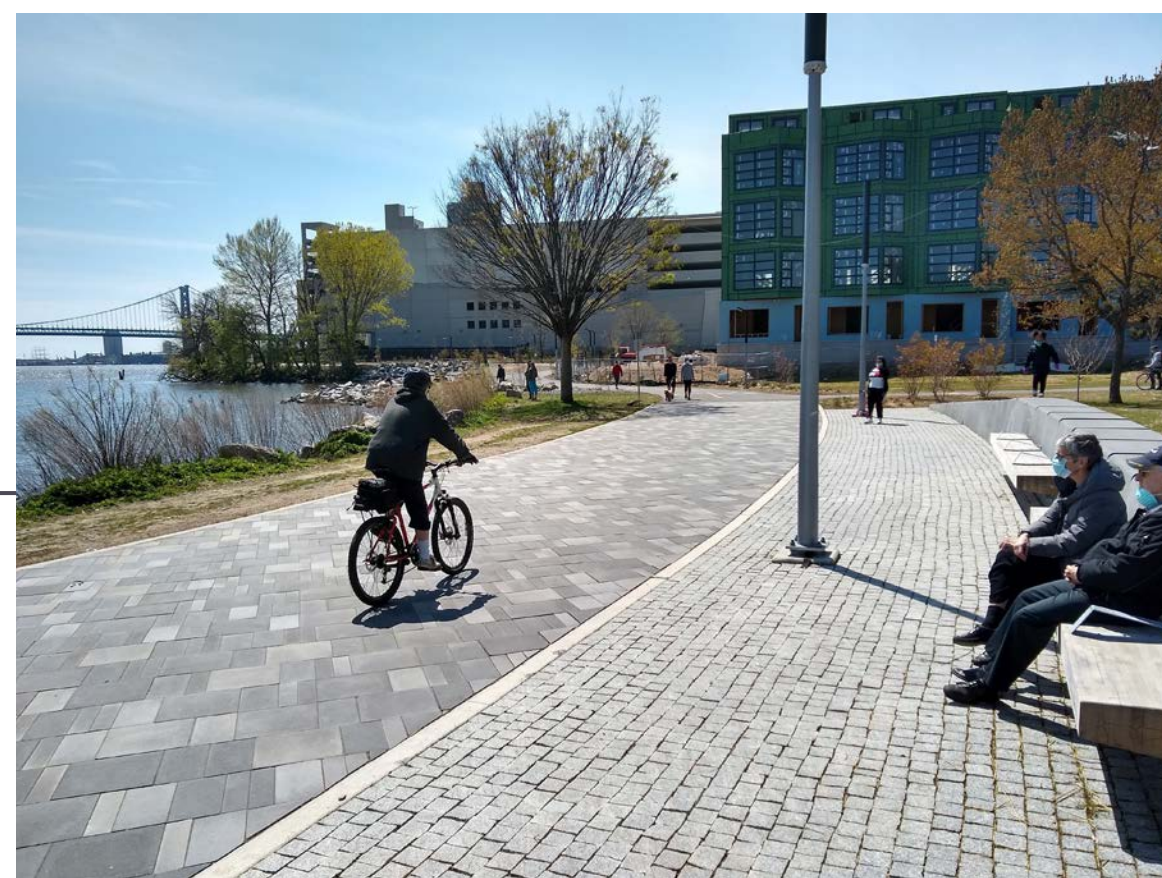


PROJECT CONTEXT




Delaware River Trail
 Columbia to Lehigh Extension
 April 29, 2023 / Open House

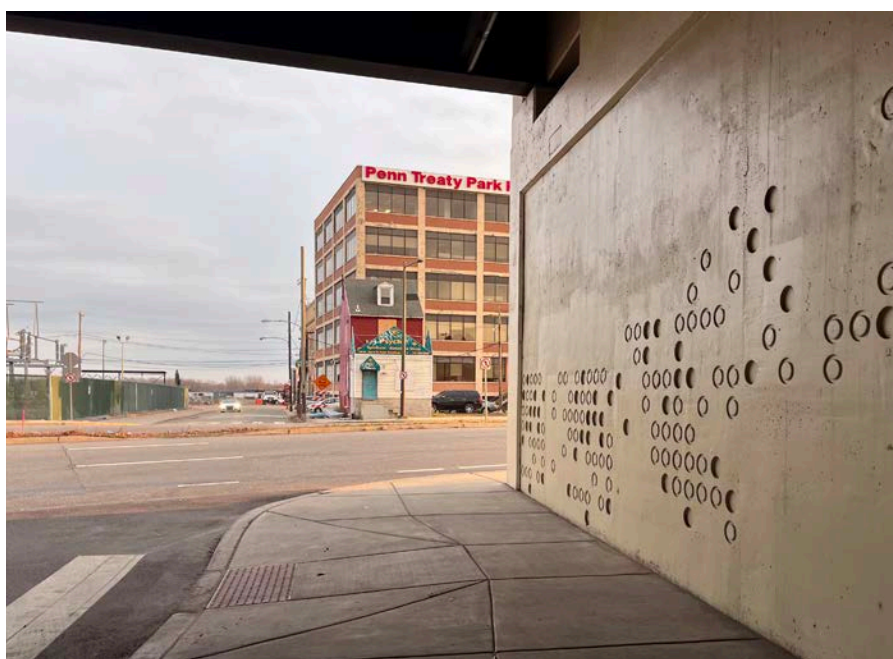
POTENTIAL CONNECTOR STREETS



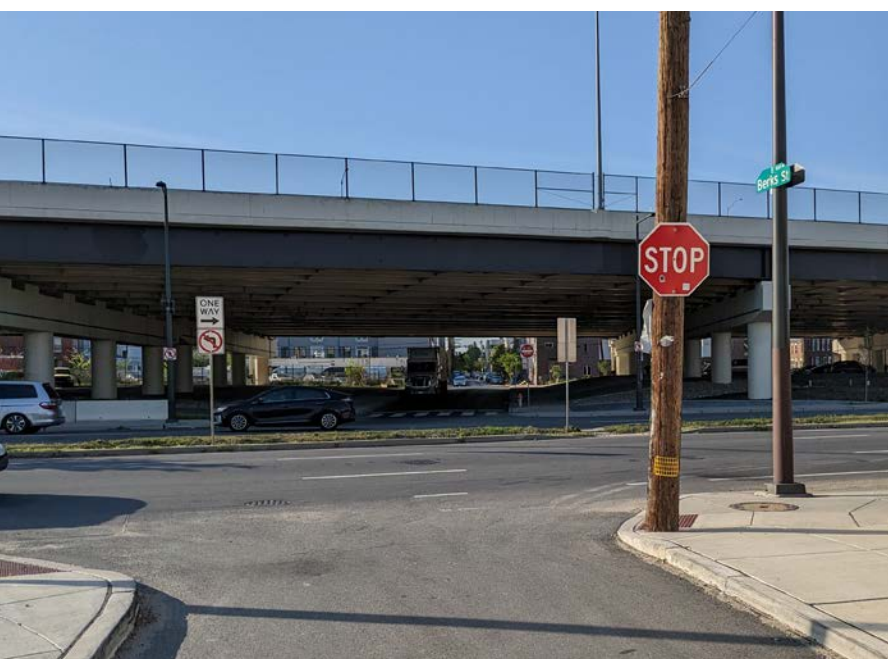
Columbia Ave



Palmer St



Berks St



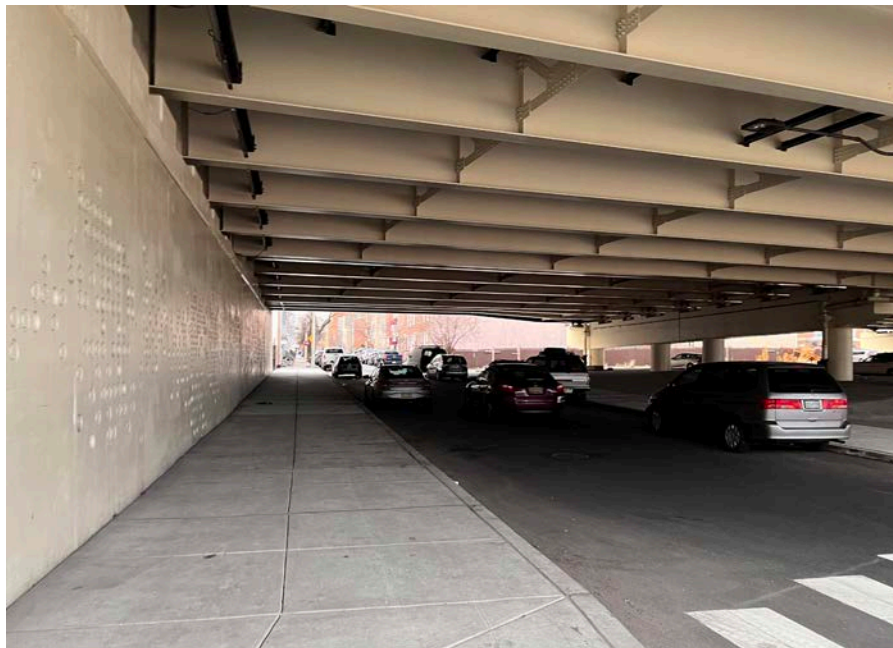
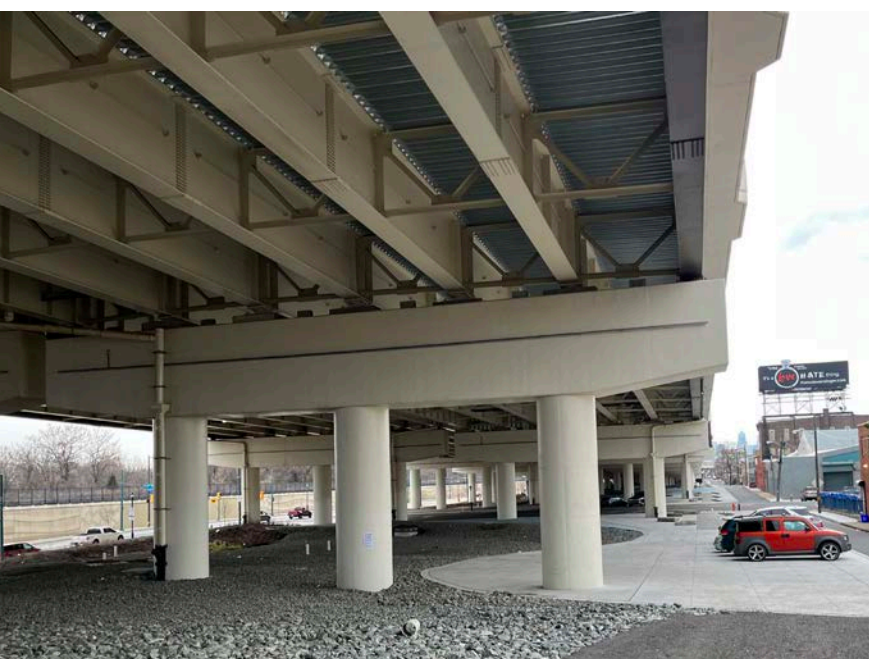
Aramingo Ave/Susquehanna Ave



Cumberland St



Lehigh Ave



Legend

- Connector Streets
- Completed Mainline Delaware River Trail
- Upcoming Delaware River Trail extension through private development
- Potential Interim Delaware River Trail
- Final Planned Delaware River Trail
- Existing/Proposed Connector Trails
- Route 15 Trolley
- Potential Intersection Improvements at Connector Streets
- On-Street Bike Lanes

Scale: 0 75' 150' 225'

North

Delaware River Trail
Columbia to Lehigh Extension

April 29, 2023 / Open House

NIV5 Delaware River WATERFRONT Corporation

Welcome to the Delaware River Trail Extension Open House!

We can't wait to hear your input!

The Delaware River Waterfront Corporation (DRWC) is a nonprofit organized exclusively for the benefit of the City of Philadelphia and its citizens. DRWC's main purpose is to design, develop and manage the Delaware River waterfront between Oregon and Allegheny Avenues.

This current planning effort is a study of the **Delaware River Trail (DRT)'s new extension** and includes determining the trail's alignment for the short- and long-terms as well as how the trail might look and feel. The study will also look at how the DRT will connect to the River Wards communities through connector streets and other trails. Once we get input from you and the study is complete, funding will be pursued and final design and construction will begin.

This study includes the Delaware River Trail (DRT) from Columbia Avenue (at Penn Treaty Park) to Lehigh Avenue, including the crossings under I-95 and across Delaware Avenue/Richmond Street.

FAQs About the DRT

How does this project relate to the improvements PennDOT installed under I-95? Will that area be cleaned up and cared for?

This study is looking at ways that the trail under I-95 can be integrated into the rest of the Delaware River Trail system. DRWC will be taking over stewardship and maintenance of this space in the coming months. DRWC is developing plans for its operations, including the installation of gate arms at the parking lots, regular trash and graffiti removal, and ongoing security efforts. Revenue generated by paid parking will support maintenance and stewardship efforts by DRWC.

How does this project relate to the Richmond Industrial Trail (RIT)?

The Richmond Industrial Trail is a planned 1.8 mile trail that would be located along the structure known as the Lehigh Viaduct. This current study will examine a connection between the planned RIT corridor and the Delaware River Trail but will not propose improvements beyond this connection.

What is happening with Graffiti Pier? How will this project integrate with those plans?

DRWC is negotiating with Conrail to acquire Graffiti Pier for the creation of a new public park. In anticipation of closing on the property, DRWC is updating the 2020 concept plan and developing documentation for the first phase of construction. Trail connections will be a key part of that work.

Stay tuned for news about public meetings related to Graffiti Pier later this year!



Trail Stop 3

Using the Trail Map Trail Amenities

We want you to use the trail in many different ways! Use the list of prospective amenities below and place them on the Trail Map. Feel free to use post-it notes to give more detail or explain your thinking.

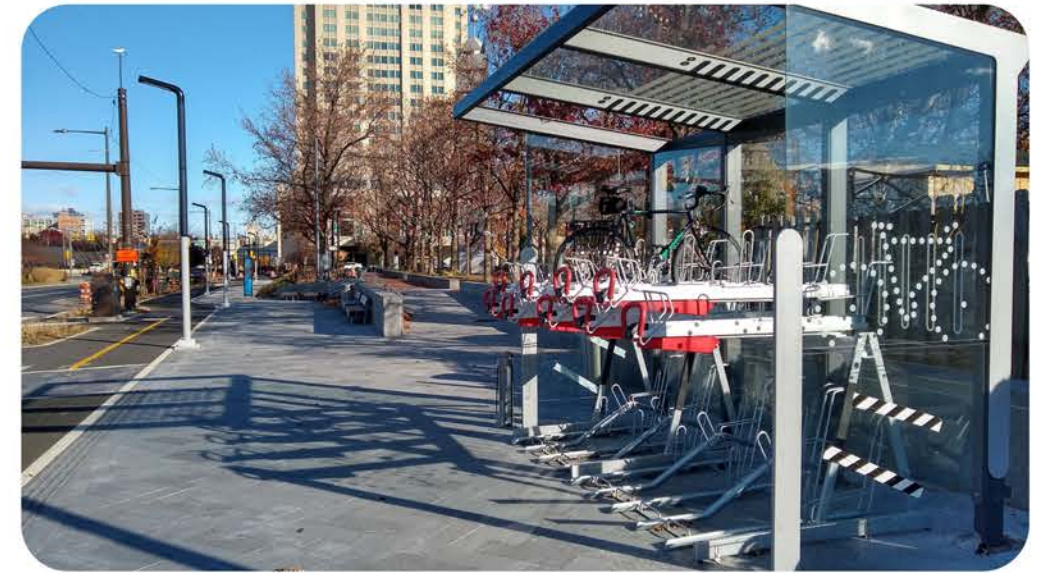
Prospective Amenities



Trail Lighting



Litter/Recycling Receptacles



Bike Parking



Pedestrian / Bicycle Counter



Parking



Drinking Fountain



Picnic Area



Restroom



Covered Pavilion

Trail Stop 3

Using the Trail Map Trail Amenities



Fishing Spot



Birdwatching



Wayfinding / Signage



Living Shoreline



Public Art



Interpretive Signage



Nature Education



Swings



Benches



Nature Play Features



Loungers



Canopy Benches

Trail Stop 3

Using the Trail

Map Trail Amenities Under the I95 Structure at Connectors



Painted Games



Stepping Stones



Light Art Installation



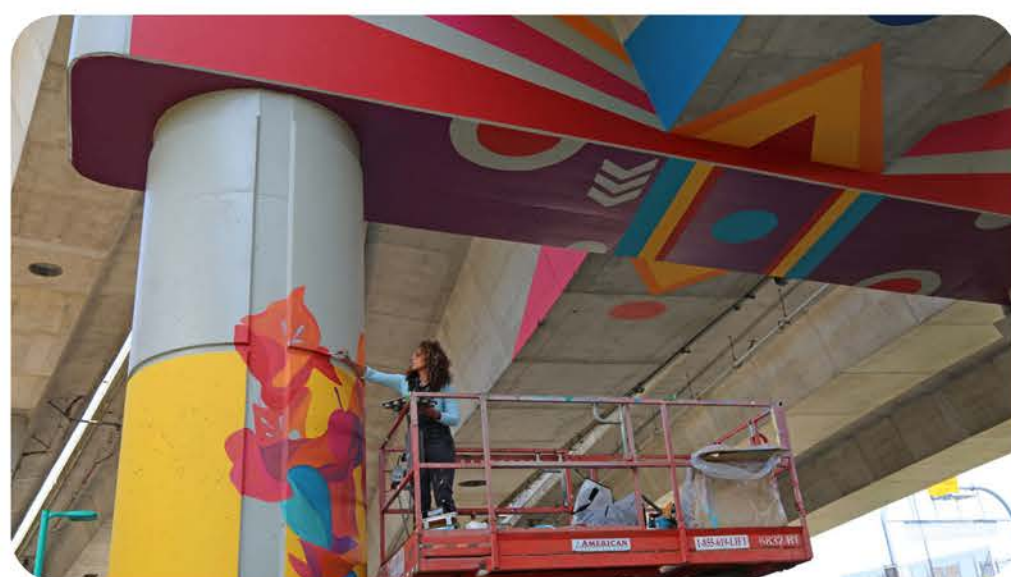
Colorful Lights



Sculptural Lighting



Projection Art



Murals



Sculptural Site Furnishings

Use post-its to place amenities on the provided map!

Trail Stop 1

Accessing the Trail

Identifying Issues

We want to make sure you can access the new Trail Extension in a safe and easy way. Help us determine which "interventions" or improvements can be made to help you access the Delaware River Trail.

Ideas for Improvements

Corner Wedges

Concrete islands installed to discourage drivers to make the wide, fast turns, but still allow truck trailers to turn.



Wayfinding Signage

Wayfinding helps people in the neighborhoods find the nearest connector street to access the DRT and amenities.



Protected Medians

Curbed medians highlight where to expect crossing pedestrians and make the intersection feel smaller.



Special Lighting

Overhead/sidewalk lighting can act as wayfinding and make the walk from/to the trail extension more inviting.



Leading Pedestrian Intervals

This simple change to the traffic signal timing allows pedestrians to cross a few seconds before cars.



PROJECT FLOW PATH

**WE ARE
HERE!**



2012
Master Plan
for Central
Delaware
Approved by
City

2012-2013
Delaware
River Trail
(DRT)
Preliminary
Design

2013
Penn
Street Trail
Constructed
(the DRT pilot
project)

2018-2019
DRT South
Constructed
(near Mifflin
Street)

2018-2020
DRT North
Constructed
(at Penn
Treaty Park)

2020-2022
DRT On-Road
Constructed
(between
Washington
Ave. and Spring
Garden St.)

2023
DRT Extension:
Columbia Ave.
to Lehigh Ave.
Preliminary
Planning &
Engagement

Next Steps
Property
Acquisitions
by DRWC,
Fundraising,
Detailed
Design &
Permitting, and
Construction



Delaware River Trail
Columbia to Lehigh Extension
April 29, 2023 / Open House